

SHOP CRANE™

PERFORMANCE LIFTING SYSTEM

by Forbel



BRIDGE CRANE SYSTEMS UP TO ONE TON CAPACITY

WWW.SHOPCRANE.COM

1-855-99-CRANE



This 12' x 12' system features a second bridge to easily handle longer objects.

Move Heavy Loads With Ease

Shop Crane™ is an overhead crane system that distributes the weight of your load over a system consisting of a bridge and two parallel runways. By spreading the weight out, movement and positioning of loads up to 2000 pounds becomes effortless.

No more positioning cherry picker wheels beneath an object, and no reason to recruit friends to help you with a job. Shop Crane™ turns the heavy lifting in your garage into a one person job.

Maximize Your Shop Space

With narrow support columns that can be tucked into your shop's corners or next to your garage door, Shop Crane™ will give you full lifting coverage in your work bay without becoming an obstacle.

Worried about headroom? Shop Crane™ was designed to maximize the amount of lift possible in standard garages. The bridge runs along the top of the system's runways, increasing the amount of usable area in your work bay.

Simple Installation

Shop Crane™ was designed for easy installation in your garage without a lot of assembly, special tools or forklifts. Our components, while very strong, are light enough that two people will be able to lift them without difficulty. With common hand tools, two step ladders and a hammer drill, your Shop Crane™ system will be assembled and ready in just a couple of hours.

See more at shopcrane.com/installation/

Shop Crane™ makes the lifting and moving of heavy loads easier for:



- Racing shops
- Automotive restoration
- Boat/jet ski maintenance



- ATV/Motorcycle work
- Tractor repair
- Snow plow removal



- Fabrication workshops
- Truck loading/unloading
- Engine builders

...and so much more!

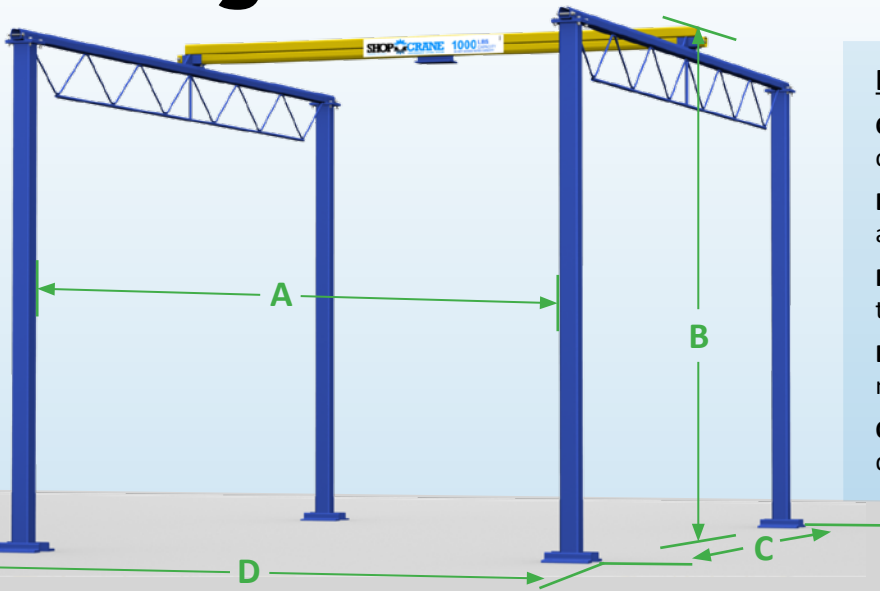


Warranty

Shop Crane™ by Gorbel products are warranted to be free from defects in material or workmanship for a period of two years or 1,000 hours use from date of shipment. This warranty shall not cover failure or defective operation caused by operation in excess of recommended capacities, misuses, negligence or accident, and alteration or repair not authorized by Shop Crane™ by Gorbel.

For full warranty information, visit www.shopcrane.com.

Designed To Fit In Your Shop



How to Size Your Shop Crane™ System

Capacity: Select either the 1/2 ton or 1 ton lifting capacity.

Door Clearance (A): Available for 8', 10', 12', 15' and 20' overhead door spans.

Minimum Ceiling Height (B): Available for floor to ceiling clearance in 2' increments from 8'-20'.

Bay Length (C): Standard system length requires minimum of 16' or 20' bay length.

Overall Span (D): Add 14" to selected "A" dimension for 1/2 ton, 16" for 1 ton systems.

Door clearance (A)					Minimum Ceiling Clearance (B)							Bay Length (C)		Overall Span (D)	
Standard Sizing:					Standard Sizing:							16'	20'	1/2 Ton: Add 14" to (A) 1 Ton: Add 16" to (A)	
8'	10'	12'	15'	20'	8'	10'	12'	14'	16'	18'	20'				

Custom sizes available! Contact customer service at 1-855-99-CRANE.

Available Options

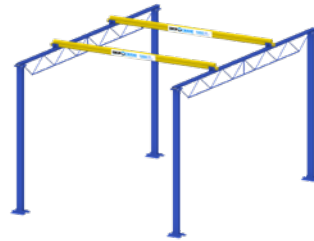
Manual and Electric Hoist

Pair your Shop Crane system with a hoist to assist lifting.



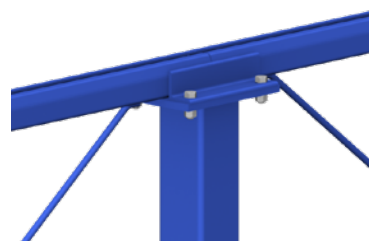
Additional Bridge

Use a second bridge for lifting and balancing longer loads.



Runway Extension Kit

Extend the length of your system with a runway splice.



Tagline Kit

Neatly gather air or electrical cables along your runways.



Learn more about Shop Crane™ system options at shopcrane.com/options!



"Five years into having one Shop Crane and we haven't had one problem. We use it and abuse it, and it's never let us down. I got ahold of Tim at Shop Crane and told him we were ready for another one out here. That new unit will help us save time and be safer... we've got the safest equipment in town."

Mark Worman

President and CEO, Graveyard Carz



From our door to your floor - *fast!*

Your Shop Crane™ system is just a phone call away!

Get a fast, thorough quote on a Shop Crane™ system for your garage in minutes from Shop Crane customer service, and be on your way to a smoother running shop.

Shop Crane™ systems leave our factory within 5 business days of your order.



About Shop Crane™ by Gorbel

Shop Crane™ is brought to you by Gorbel, the leader in industrial overhead material handling in North America. Since 1977, Gorbel has been an innovator and leader in the enclosed track work station crane industry, as well as a leading manufacturer of high-performance manual and motorized I-beam jib cranes.

With over 40 years of providing ergonomic lifting solutions for industrial use, Gorbel is pleased to offer our material handling expertise for non-industrial users with Shop Crane™. By providing a lifting solution that reduces the effort needed for lifting and positioning heavy loads, Shop Crane™ by Gorbel will make your workshop safer and more efficient.

Check us out at
ShopCrane.com for:

- Photos
- Videos
- Installation tips
- Dimensions

...and more!



www.shopcrane.com
phone: 1-855-99-CRANE
email: info@shopcrane.com

600 Fishers Run
PO Box 593
Fishers, NY 14453

Follow us on:

